

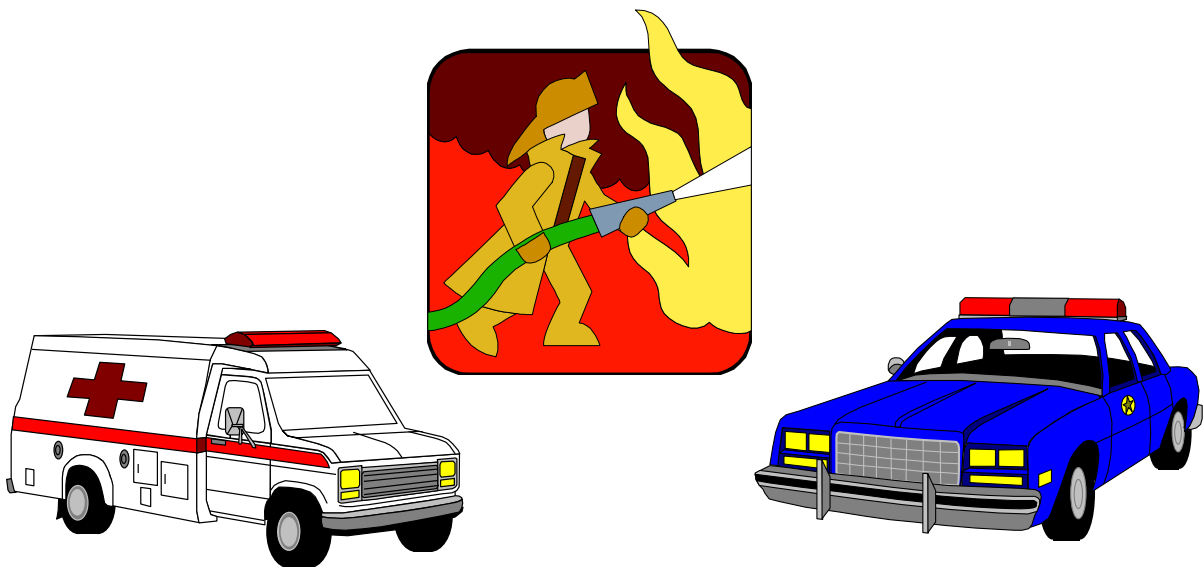
# Crystal City, Missouri

## Comprehensive Plan Update & Comprehensive Growth Management Plan

---

### 8.0 Public Safety

---



# 911

CREATING THE FUTURE

POLICE, FIRE, OTHER EMERGENCY AND PUBLIC SAFETY  
SERVICES

# TABLE OF CONTENTS

	<u>PAGE</u>
<b>8.1 PURPOSE AND SCOPE OF ANALYSIS-----</b>	<b>3</b>
<b>8.2 CURRENT STRUCTURE-----</b>	<b>3</b>
<b>8.3 POLICE/DISPATCH/MUNICIPAL COURT-----</b>	<b>3</b>
8.3.1 Police Department -----	3
8.3.2 Dispatch Department-----	4
8.3.3 Municipal Court-----	4
8.3.4 Department Financial History-----	5
<b>8.4 FIRE DEPARTMENT-----</b>	<b>6</b>
<b>8.5 AMBULANCE SERVICE-----</b>	<b>9</b>
<b>8.6 OTHER PUBLIC SAFETY SERVICES-----</b>	<b>9</b>
<b>8.7 PUBLIC SAFETY GRANT PROGRAMS-----</b>	<b>10</b>
<b>8.8 CONCLUSIONS-----</b>	<b>14</b>

## **8.0 PUBLIC SAFETY**

### **8.1 PURPOSE AND SCOPE OF THE ANALYSIS**

This analysis will focus on reviewing the level of emergency services within the City. Review of the funding sources and cost for the services have been reviewed. No public service is more essential and expected than proper police and fire protection as well as medical emergency response in maintaining a high quality of life in a community.

### **8.2 CURRENT SERVICES AND STRUCTURE**

Crystal City has a full service police force, dispatch 911 service, a volunteer fire department, is served by a regional ambulance district, plus the City provides animal control, malaria control, and maintains the levee protecting the City from flooding from the Mississippi River. The City has mutual aid agreements with Jefferson County and neighboring communities for all emergency services. The Police Department operates the 911 dispatch services within the City. While the Fire Department is a volunteer force the City does fund administrative and management cost as well as equipment purchase and maintenance. The City operates animal control within the City. Due to the close proximity to the Mississippi River the City also provides malaria control by spraying for mosquitoes. The City also maintains the flood levees protecting the City from flooding of the Mississippi. Ambulance service is provided by the Joachim-Plattin Ambulance District which serves a region consisting of an estimated 63,000 people.

### **8.3 POLICE DEPARTMENT/DISPATCH/MUNICIPAL COURT**

#### **8.3.1 POLICE DEPARTMENT**



The Crystal City Police Department has a staff of sixteen officers. The Department has a patrol division, a D.A.R.E. officer, a Bike Patrol, two Captains, two detectives, and the Chief of Police.

The Crystal City Police Department currently has two detectives assigned to the investigative division. The detective bureau conducts follow-up investigations on cases initiated by the patrol division and self-generates investigations for narcotics and activities of other criminal nature. The detectives work closely with investigators from other law enforcement agencies, including the St. Louis Major Crime Squad, and the prosecuting attorney's office. The D.A.R.E. Officer serves both the Crystal City School District and the St. Pius High School. Currently the ratio of officers to

population is 3.53 officers per 1,000 in population. This compares to the national average of 3 officers per 1,000 in population.

**Full-time Law Enforcement Employees in 2006: 21 (16 officers).**

**Officers per 1,000 residents here:**  **3.53**

**US city average:**  **3.00**

The Department handles over 15,000 calls per year.

### **8.3.2 DISPATCH DEPARTMENT**

The Communications Center has four full-time dispatchers and one part-time records clerk. The dispatch center is a fully functional, 24 hour-a-day, 7 day-a-week communications and 911 center. Dispatchers handle all incoming calls for police, fire and EMS. They also operate the REJIS computer system and Computer Aided Dispatching System. The City is within the 911 service area of Jefferson County, which is funded by a 1/2 cent sales tax, but the City manages and funds their own operations. The Countywide 911 maintains the telephone system.

### **8.3.3 MUNICIPAL COURTS**

The Crystal City Municipal Court is the Judicial Branch of the City Government and by state law is a division of the 23rd Circuit of Jefferson County. The staff of the Municipal Court is comprised of the Municipal Judge, and Prosecuting Attorney. The Municipal Court of Crystal City is located in the City Hall Building and Police Department.

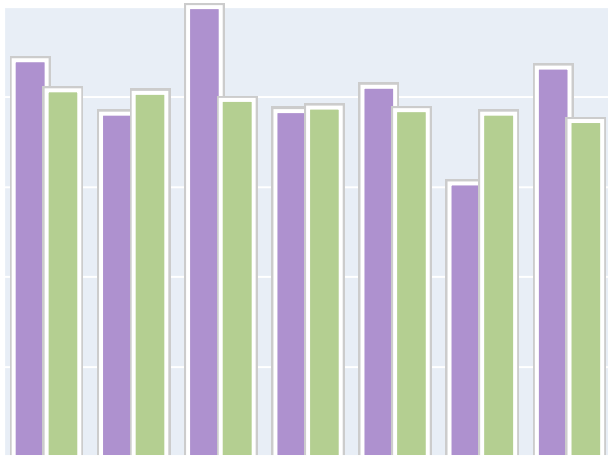
The Court prepares, maintains, and safeguards all records, reports, and documents relating to Court activities. The Court is responsible for recording alleged violations of city codes or ordinances, issuing summons to defendants and witnesses, hearing evidence presented in court, ruling on cases, receipting fines and court costs, and distributing such funds to their proper destinations.

The Municipal Court primarily handles cases filed by the Crystal City Police Department and the Crystal City Department of Public Works. These cases include traffic violations, non-traffic violations, as well as zoning and building code violations.

The Municipal Court generates income from fines and court fees which assist in the funding of the Court and the Police Department. Revenues have averaged \$248,519 per year for the past five years.

Crime within the City is close to the national average. Theft is the highest percentage of crime accounting for about 70% of the total crime in the City.

Crime in Crystal City by Year							
Type	2001	2002	2003	2004	2005	2006	2007
<b>Murders</b>	0	0	0	0	0	1	1
per 100,000	0.0	0.0	0.0	0.0	0.0	22.0	21.7
<b>Rapes</b>	8	0	8	4	4	1	5
per 100,000	187.2	0.0	180.2	89.7	88.4	22.0	108.7
<b>Robberies</b>	0	0	2	1	3	2	5
per 100,000	0.0	0.0	45.1	22.4	66.3	44.0	108.7
<b>Assaults</b>	10	27	21	19	16	12	8
per 100,000	234.0	627.0	473.1	426.0	353.5	264.3	174.0
<b>Burglaries</b>	27	15	11	27	19	16	23
per 100,000	631.9	348.4	247.8	605.4	419.8	352.3	500.1
<b>Thefts</b>	103	142	135	96	144	79	122
per 100,000	2410.5	3297.7	3041.2	2152.5	3181.6	1739.7	2652.8
<b>Auto thefts</b>	11	15	8	11	9	14	7
per 100,000	257.4	348.4	180.2	246.6	198.9	308.3	152.2
<b>Arson</b>	N/A	0	0	1	1	0	0
per 100,000	N/A	0.0	0.0	22.4	22.1	0.0	0.0
<b>City-data.com crime index</b> (higher means more crime, U.S. average = 320.9)	357.8	309.6	405.7	311.9	333.8	246.6	351.2



**CHART COMPARING  
CRYSTAL CITY CRIME  
RATE WITH NATIONAL  
AVERAGE**

PURPLE IS CRYSTAL CITY - GREEN IS NATIONAL AVERAGE 2001-2007

### 8.3.4 Department Financial History

The City funds the operations cost of the Police Department, Dispatching, and the Municipal Courts from the General Fund and the fines and court fees collected. The only dedicated funds are the fines and fees collected. The annual cost per resident is currently \$153.28, or \$383.24 per household.

**FINANCIAL OPERATING HISTORY**

<b>REVENUE</b>	<b>2004</b>	<b>2005</b>	<b>2006</b>	<b>2007</b>	<b>2008</b>
Fines and Municipal Court Fees	\$231,616	\$275,648	\$255,891	\$312,919	\$266,519
<b>EXPENSES</b>					
Dispatching	\$173,526	\$172,612	\$155,949	\$169,141	\$181,389
Police Department	\$718,188	\$725,942	\$769,013	\$821,068	\$713,703
Municipal Court	\$70,211	\$66,409	\$73,016	\$68,529	\$65,995
<b>TOTAL EXPENSES</b>	<b>\$961,925</b>	<b>\$964,963</b>	<b>\$997,978</b>	<b>\$1,058,738</b>	<b>\$962,087</b>
<b>TOTAL COST OF OPERATIONS</b>	<b>\$730,309</b>	<b>\$689,315</b>	<b>\$742,087</b>	<b>\$745,819</b>	<b>\$695,568</b>
Spending per Resident	\$160.94	\$151.90	\$163.53	\$164.35	\$153.28
Spending per Household	\$402.38	\$379.79	\$408.87	\$410.92	\$383.24
Accidents in City	151	183	151	144	136
Crime in City	159	196	125	171	NA

**8.4 FIRE DEPARTMENT**

The Crystal City Fire Department is a volunteer force. The City does however fund the administrative, management, facilities, equipment, and maintenance cost. No wages are paid to the firefighters, since they are volunteers. The City funds the Department from a portion of the City property tax.

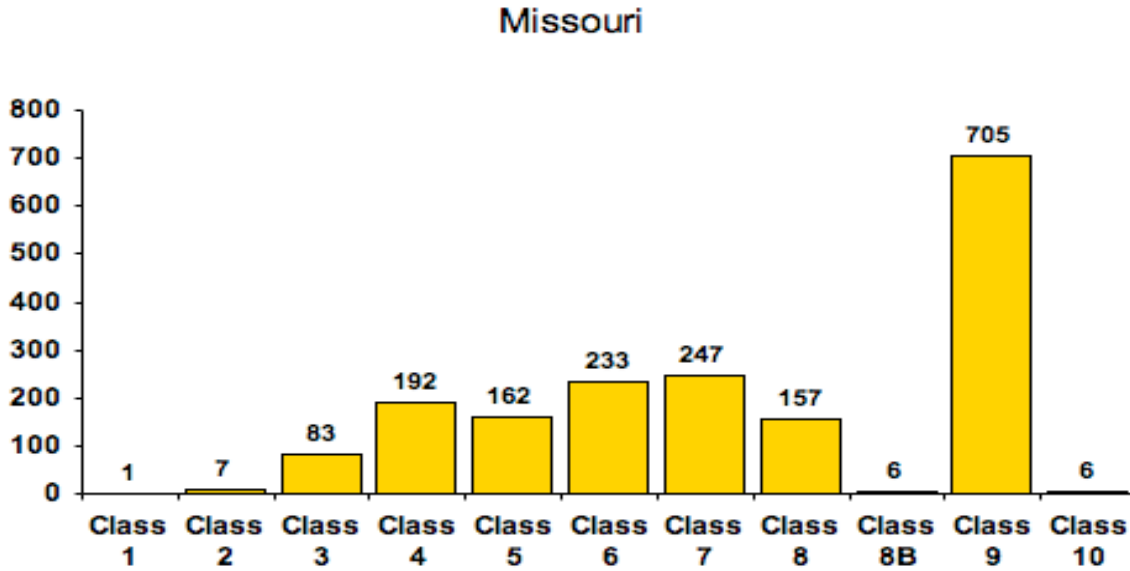
Fire Department	\$66,192	\$74,679	\$69,056	\$78,061	\$85,761
Cost per Resident	\$14.59	\$16.46	\$15.22	\$17.21	\$18.90
Cost per Household	\$36.47	\$41.15	\$38.05	\$43.01	\$47.26

The cost of service is very affordable in relationship to many other communities. The quality of service, equipment, and training of the Department is very good, which is reflected in a current ISO rating of five.

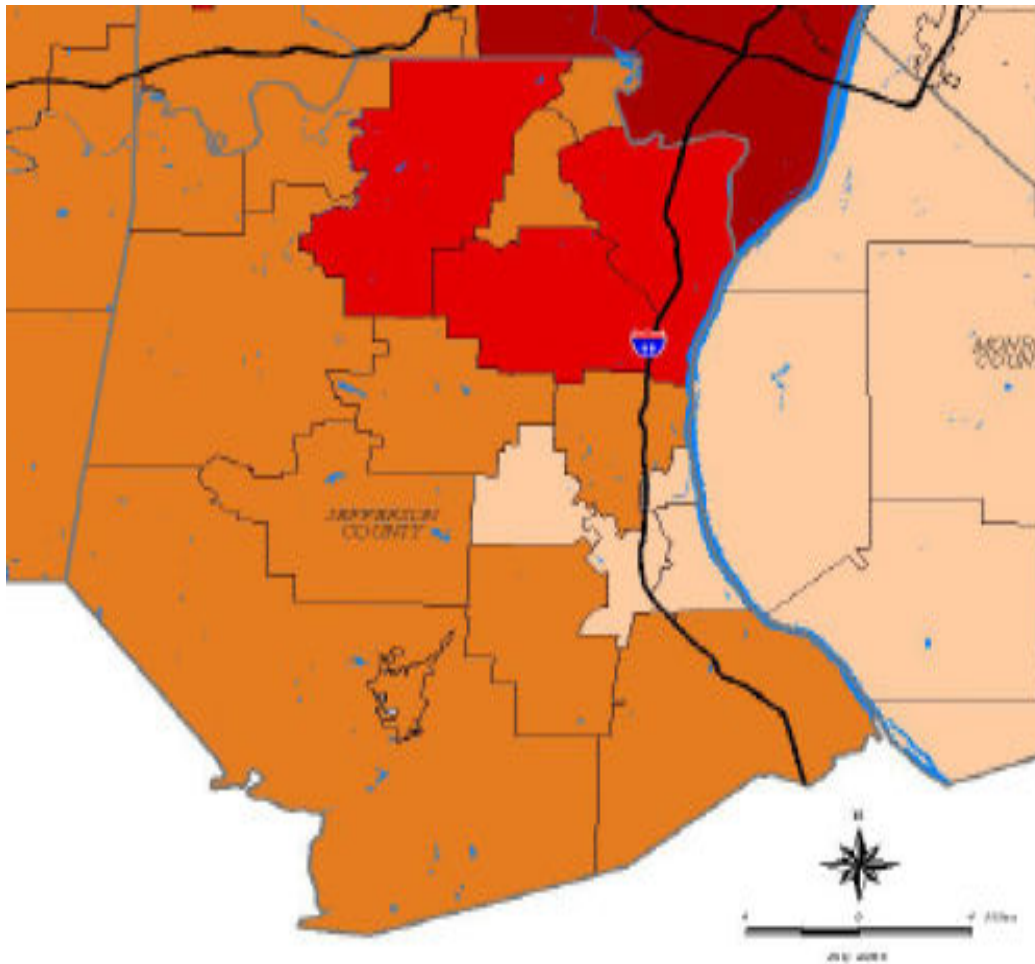
The ISO rating for a community directly affects insurance rates for residents and businesses. ISO stands for “The Insurance Services Office, Inc.” ISO is a rating service used by insurance companies to measure the quality of fire protection for an area. The ISO rates a community under their Public Protection Classification (PPO). The rating is based on four different variables which are listed below:

1. ALARM AND DISPATCH: 10%
2. TRAINING: 9%
3. PERSONNEL 15%
4. EQUIPMENT 26%
5. WATER SUPPLY 40%

The ISO will regularly update a communities rating or will rerate upon request if factors have changed and requested by the community. The rating system is from a 1 to 10, with 1 being the best and 10 the worst. Insurance rates vary little from one to five. Rates significantly increase if the rating climbs to a seven or eight. The City Department has scored very well in its rating review by ISO. Below is a chart showing the number of communities in each ISO class. The ISO rating for the City reflects that its rating is within the top 25% of communities in the State.



**ISO RATINGS FOR THE STATE OF MISSOURI  
NUMBER ABOVE EACH CLASS RATING REFLECTS THE TOTAL  
MUNICIPALITIES IN THE STATE WITH THAT RATING**



**LEGEND**

-  Volunteer Firefighters (0% career)
-  Mostly Volunteer Firefighters (1%-50% career)
-  Mostly Career Firefighters (51%-99% career)
-  Career Firefighters (100% career)
-  No Data (Data not available or data is mixed by fire department)
-  County Boundaries
-  Interstate Highways

RENDERED: JACQUES PONSARD, ESQ. COUNTY COMMISSIONERS  
 512.735.4800/2030340, 512.735.4800/2030340  
 BOARD OF COMMISSIONERS

**MAP OF FIRE PROTECTION SERVICES FOR THE REGION**

**8.5 AMBULANCE SERVICE:**

The Joachim-Plattin Ambulance District, which serves Crystal City, includes a wide range of demographics from rural regions to small cities, to heavy industry and the Mississippi river (which runs along JPAD's eastern border). JPAD spans across 9 separate fire districts and 5 different police departments (including Jefferson County Sheriff's Department). Operating from 4 stations, JPAD provides Advanced Life Support ambulances on a 24/7/365 basis. Along with 911 emergencies, the district also provides a non-emergency transfer service.

The District is funded by a District wide sales and property tax. In August of 2008 the voters of the District approved a ½ cent sales tax in return for a reduction in the property tax rate by 50%. The property tax rate in 2008 was 31.29 cents per \$100 of assessed value. The District Board lowered the rate for 2009 to 27 cents per \$100. Since the District has not received all of the revenue from sales tax collections the rate is higher than the 50% level. The District will be required to lower the rate to 15.65 cents per \$100 in 2010, assuming sales tax revenues meet the projected \$2.2 million.



**8.6 OTHER PUBLIC SAFETY SERVICES PROVIDED BY CITY**

In addition to the normal public safety services provided by the City and special taxing districts, the City provides animal control services to control stray animals for public health and safety reasons. Due to the fact that the City adjoins the Mississippi River and various streams and on the east side of the City the control of mosquitoes is essential to control the spread of disease. The City funds a malaria control program whereby the City regularly sprays for mosquitoes. The City also funds and maintains a levee system to protect the City from flooding from the Mississippi. The animal control and malaria control service is funded from the General Fund with no dedicated revenue. The levee system is funded from a ½ cent dedicated sales tax. The Levee Fund has excess revenue over expenses; however funds must be reserved for future maintenance and emergencies.

**ANIMAL & MALARIA CONTROL  
HISTORIC COST FROM THE GENERAL FUND  
COST PER RESIDENT & HOUSEHOLD**

<b>EXPENSES</b>	<b>2004</b>	<b>2005</b>	<b>2006</b>	<b>2007</b>	<b>2008</b>
Canine Control	\$24,487	\$22,143	\$23,134	\$25,150	\$26,975
Malaria Control	\$37,779	\$25,940	\$28,668	\$23,510	\$23,790
<b>TOTALS</b>	<b>\$62,266</b>	<b>\$48,083</b>	<b>\$51,802</b>	<b>\$48,660</b>	<b>\$50,765</b>
Cost per Resident	\$13.73	\$10.60	\$11.42	\$10.73	\$11.19
Cost per Household	\$34.31	\$26.50	\$28.55	\$26.81	\$27.97

<b>CRYSTAL CITY LEVEE FUND</b>					
<b>REVENUE</b>	<b>2004</b>	<b>2005</b>	<b>2006</b>	<b>2007</b>	<b>2008</b>
Sales Tax	\$307,242	\$307,142	\$297,208	\$314,218	\$326,195
<u>Grant Revenue and State Aid</u>		<u>\$0</u>		<u>\$0</u>	<u>\$0</u>
<b>TOTAL REVENUE</b>	<b>\$307,362</b>	<b>\$307,142</b>	<b>\$297,208</b>	<b>\$314,218</b>	<b>\$326,195</b>
<b>EXPENDITURES</b>					
Flood Levee	\$3,572	\$26,727		\$11,083	\$21,341
<u>Capital Outlay</u>	<u>\$370,884</u>				
<b>TOTAL EXPENDITURES</b>	<b>\$374,456</b>	<b>\$26,727</b>	<b>\$0</b>	<b>\$11,083</b>	<b>\$21,341</b>
<b>EXCESS REVENUE</b>	<b>-\$67,094</b>	<b>\$280,415</b>	<b>\$297,208</b>	<b>\$303,135</b>	<b>\$304,854</b>
<b>TRANSFER FROM (TO) OTHER FUNDS</b>					
<b>EXCESS OF REVENUES OVER EXPENDITURES AFTER TRANSFERS</b>	<b>-\$67,094</b>	<b>\$280,415</b>	<b>\$297,208</b>	<b>\$303,135</b>	<b>\$304,854</b>
<b>FUND BALANCE</b>	<b>-\$153,074</b>	<b>\$127,341</b>	<b>\$424,549</b>	<b>\$727,684</b>	<b>\$1,032,538</b>
<b>COST PER RESIDENT &amp; HOUSEHOLD BASED ON REVENUE COLLECTED</b>					
Cost per Resident	\$67.73	\$67.69	\$65.50	\$69.25	\$71.88
Cost per Household	\$169.35	\$169.23	\$163.75	\$173.13	\$179.73

### 8.7 GRANT PROGRAMS FOR PUBLIC SAFETY

Following is a listing of various public safety related grants and loans which the City may qualify for. General information and contact information is provided. The City should explore all grant opportunities possible. Most grants are competitive and have deadline dates for application.

#### **PUBLIC SAFETY PROGRAMS**

**PROGRAM NAME:** 24 Hour Emergency Response Telephone Number

**AGENCY:**

State Emergency Management Agency

PO Box 116

Jefferson City, MO 65102

573-751-2748

**TYPE OF ASSISTANCE:** Coordination of the resources of the State of Missouri when local governments are faced with an emergency that is beyond their capacity to mediate.

**ELIGIBILITY:** Cities and counties.

**PROGRAM NAME:** Emergency Management Program Grant (EMPG)

**AGENCY:**

State Emergency Management Agency  
PO Box 116, Jefferson City, MO 65102  
573-526-9136

**TYPE OF ASSISTANCE:** Grants are provided for the development of local civil defense operations, includes financial assistance for salaries, administration and travel.

**ELIGIBILITY:** Cities and counties.

**PROGRAM NAME:** Local Governments Reimbursement

**AGENCY:**

U.S. Environmental Protection Agency  
800-431-9209  
E-MAIL: [lgrinfo@epa.gov](mailto:lgrinfo@epa.gov)

**WEB PAGE:** <http://www.epa.gov/superfund/programs/er/lgr/index.htm>

**TYPE OF ASSISTANCE:** Supplemental funding to local governments for costs related to temporary emergency measures conducted in response to releases or threatened releases of hazardous substances. Eligible local governments may submit applications to EPA for reimbursement of up to \$25,000 per incident.

**ELIGIBILITY:** Local governments.

**PROGRAM NAME:** Emergency Management Training (EMT)

**AGENCY:**

State Emergency Management Agency  
PO Box 116  
2302 Militia Drive, Jefferson City, MO 65102  
573-526-9121  
EMAIL: [srhoades@sema.state.mo.us](mailto:srhoades@sema.state.mo.us)

**TYPE OF ASSISTANCE:** Training opportunities in disaster mitigation, preparedness, response, and recovery.

**ELIGIBILITY:** Emergency managers, public officials, members of volunteer relief organizations, and professionals in related fields.

## **FIRE FIGHTING PROGRAMS**

**PROGRAM NAME:** Rural Community Fire Protection Program

**AGENCY:**

Missouri Department of Conservation  
2901 West Truman Boulevard, Jefferson City, MO 65109  
573-526-6670

**WEB PAGE:** <http://www.conservation.state.mo.us/forest/fire/rcfpp.htm>

**TYPE OF ASSISTANCE:** The Rural Community Fire Protection Program is a matching grant program for rural fire departments. Rural departments can purchase fire-fighting equipment and receive reimbursement for up to one-half of

the purchase price. Each year, the Conservation Department issues more than \$300,000 in matching grants to rural fire departments.

**ELIGIBILITY:** Cities with a population of 10,000 or under.

**PROGRAM NAME:** Assistance to Firefighters Grant Program

**AGENCY:**

U.S. Fire Administration  
16825 S. Seton Ave.  
Emmitsburg, MD 21727  
301-447-1221

**WEB PAGE:** <http://www.usfa.fema.gov/dhtml/inside-usfa/grants.cfm>

**TYPE OF ASSISTANCE:** Provide financing for training, wellness and fitness, firefighting equipment, personal protective equipment, firefighting vehicles, and fire prevention programs.

**ELIGIBILITY:** Fire departments.

**PROGRAM NAME:** Rural Community Fire Protection Program

**AGENCY:**

Missouri Department of Conservation  
2901 West Truman Boulevard, Jefferson City, MO 65109  
573-526-6670

**WEB PAGE:** <http://www.conservation.state.mo.us/forest/fire/rcfpp.htm>

**TYPE OF ASSISTANCE:** The Rural Community Fire Protection Program is a matching grant program for rural fire departments. Rural departments can purchase fire-fighting equipment and receive reimbursement for up to one-half of the purchase price.

**ELIGIBILITY:** Cities with a population of 10,000 or under.

**PROGRAM NAME:** Fire and Rescue Loans

**AGENCY:**

USDA Rural Development  
601 Business Loop 70 West  
Parkade Center, Suite 235, Columbia, MO 65203  
573-876-0976

**WEB PAGE:** [http://www.rurdev.usda.gov/mo/fact\\_fire.htm](http://www.rurdev.usda.gov/mo/fact_fire.htm)

**TYPE OF ASSISTANCE:** Provide financing for fire and rescue services. Applicant must certify, and USDA Rural Development must concur, that it is unable to finance the proposed project from their own resources or through commercial credit at reasonable rates and terms.

**ELIGIBILITY:** Municipalities under 20,000. Priority will be given to communities of less than 5,000 population.

**PROGRAM NAME:** Missouri Fire and Rescue Training Institute

**AGENCY:**

Missouri Division of Fire Safety  
Fire and Rescue Training Institute

240 Heinkel Building, Columbia, MO 65211  
800-869-3476

**E-MAIL:** [frti@missouri.edu](mailto:frti@missouri.edu)

**WEB PAGE:** <http://www.mufrti.org/>

**TYPE OF ASSISTANCE:** A variety of cost-free training programs to emergency service personnel throughout the state. The largest contract is with the Missouri Fire and Rescue Training Institute at the University of Missouri. This funding allows the Institute to provide over 300 courses annually to more than 5,000 participants.

**ELIGIBILITY:** Individual fire departments or groups of fire departments.

## **LAW ENFORCEMENT PROGRAMS**

**PROGRAM NAME:** Juvenile Justice Grant Programs

**AGENCY:**

Missouri Department of Public Safety  
PO Box 749, Jefferson City, MO 65102  
Sandy Rempe, Public Safety Manager  
573-751-4905

**PROGRAM NAME:** Juvenile Justice Grant Programs (cont'd)

**E-MAIL:** [Sandy@dps.state.mo.us](mailto:Sandy@dps.state.mo.us)

**WEB PAGE:** <http://www.dps.state.mo.us/dps/DPS2002/grantpage.htm>

**TYPE OF ASSISTANCE:** Various grants available for Juvenile Offender programs. Grants include: Juvenile Accountability Incentive Block Grant (JAIBG), Title II or Formula Grants Funding, Delinquency and Youth Violence Prevention Program (Title V), Challenge Grants.

**ELIGIBILITY:** Depends on particular grant, but includes: juvenile courts, law enforcement agencies, correctional facilities, and community organizations.

**PROGRAM NAME:** Byrne Formula Grant Program (NCAP)

**AGENCY:**

Missouri Department of Public Safety  
PO Box 749, Jefferson City, MO 65102  
573-751-4905  
Eric Shepherd, Public Safety Manager

**EMAIL:** [Eric@dps.state.mo.us](mailto:Eric@dps.state.mo.us)

**WEB PAGE:** <http://www.dps.state.mo.us/dps/DPS2002/grantpage.htm>

**TYPE OF ASSISTANCE:** Provides financial assistance for programs that improve the enforcement of state and local laws that establish offenses similar to offenses established in the Controlled Substances Act (21 U.S.C. 801, et seq.), and to improve the functioning of the criminal justice system with emphasis on narcotics, violent crime and serious offenders.

**ELIGIBILITY:** Any state and local unit of government.

**PROGRAM NAME:** Local Law Enforcement Block Grant (LLEBG)

**AGENCY:**

Missouri Department of Public Safety  
PO Box 749, Jefferson City, MO 65102  
573-751-4905

Eric Shepherd, Public Safety Manager  
Email: Eric@dps.state.mo.us

**Web Page:** <http://www.dps.state.mo.us/dps/DPS2002/enforcement/LLEBG.htm>

**TYPE OF ASSISTANCE:** These funds are used by the state to reduce crime and improve public safety in local jurisdictions. Short-term contracts are awarded in amounts up to \$10,000 for purchase of basic officer safety equipment that will enable Missouri law enforcement to meet this goal. A 10% cash match of the total project cost of each application is required.

**ELIGIBILITY:** Law enforcement agencies.

## 8.8 CONCLUSIONS

Crystal City invests a significant amount of tax revenue for public safety within the City. In 2008 the cost per resident is \$255.25 or \$638.20 per household. The City does not fund any cost of the Ambulance Service, since this is a special taxing district. The wide range and high quality of service provided to residents certainly warrants the cost level. It is clear that public safety is a high priority for the residents of the City and the City leaders, both past and present, have done a quality job in providing this high level of service.

The City is part of the area of the County which will be collecting a new ½ cent sales tax dedicated to the Jefferson County 911 service passed in April of 2009. The tax is dedicated to fund emergency telephone service, central dispatching of fire protection, law enforcement agencies, emergency ambulance service or any other emergency services including the operational costs associated with the maintenance of communications and emergency equipment. The City currently is funding all 911 services within the City. The County maintains the telephone equipment. The City can continue operating and maintaining 911 service within the City, or allow the County System to provide the service. It is believed that the City should maintain its own system. The City may wish to have discussions with the County in order to negotiate a greater share of the 911 dedicated funds which the County receives.